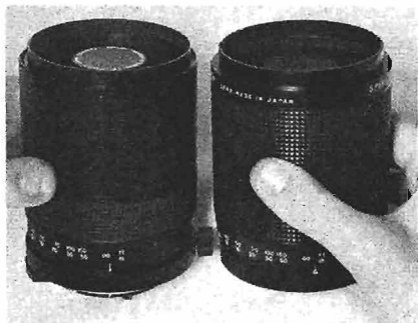


## Can A Yashica Tomioka Be A Spiratone 500?

Two years ago we were crowing about the highly compact, high-quality combination of a 500mm f/8 Yashinon DX mirror lens (focusing to 13 ft.!) and an Olympus OM-2, together being only 3 lb. 2 oz., and 7 in. long. For \$85, you could adapt the lens, with its Yashica thread mount, to the Olympus body. The run was on, but alas, the lens was discontinued in thread mount, and it is really not suitable for alteration in its Contax RTS mount. Contax owners had all the luck while we were frozen out.

We were more than surprised and delighted when we examined the new Spiratone 500mm f/8 Minitel to find, under a slight change in cosmetics, an old familiar mirror face. Sure enough, 'twas our old friend, the Yashinon DX mirror, which Spiratone had evidently obtained from Yashica's source, the subsidiary Tomioka optical factory. While the lens did lose a few frills—rear filter slots and filters plus a sliding lens hood—it gained multicoating and an easy-to-interchange T-mount adapter system, making it child's play to attach it to nearly any SLR. Plus it lost more weight.

The new lens weighs some 4¼ oz. less than the old, thanks to the absence of the filter slot, lens hood and custom Olympus mount. However, the front of the Minitel is threaded to accept standard 77mm filters and a lens hood. Additionally, filters can be fitted between the rear of the lens and the camera adapter. Three such filters are furnished: skylight, 4X neutral density and yellow. This lens must certainly be the lightest, most compact, bargain quality super telephoto optic available. Price of the 500mm f/8 Minitel is \$300 with camera adapter.



Optical birds of a Tomioka feather: Yashica on the left, Spiratone on right.

**Yes, this is the total length of the new**

**Spiratone** 500<sup>m</sup>/<sub>m</sub> f/8  
MULTI-COATED

**Mirror Minitel®**

Place your 135mm lens or your camera body next to this line  to get a better idea of how unbelievably compact the Minitel is.

Yet, thanks to its folded optical path (see diagram), it's as powerful an image maker as the 15-20" long conventional 500mm lenses, yielding a 10x linear larger image than your normal lens (that's 100x the area magnification!)

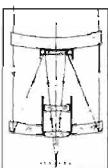
But compactness is not the only reason you'll want to buy this lens. It's also an outstanding performer, with multi-coated optics, providing a resolving power and a virtually complete absence of color aberrations that only the costliest of the big lenses can equal. If you're an oldtimer, you'll remember that Spiratone made mirror lens history twice before: first, when we introduced the Russian MTO, and then, with the first high quality, economically-priced Japanese mirror lens (it was, at its time, the shortest and lightest at 8½" long and 2½ lbs!)

The new Spiratone MIRROR MINITEL is only 4¾" long, weighs almost a pound less and accepts rear-mounting filters. In fact, the three most commonly used ones, yellow, skylight and neutral density 4X are included in the price, as is a custom case (easily saving you \$75 over what you'd have to spend for accessories right there). Still, the MINITEL has 77mm front threads so that you can use 77mm screw-in filters (including our Custom Polarizer and our protective glass Opticap) as well as a screw-in lenshood.

The MINITEL is amazingly hand-holdable—in fact, probably more so than a '200'. And if you add our 1000mm (f/16) converter to it, you'll add only a single inch to the overall length—imagine a 1000mm (20X magn.) lens that's only 5¾ inches long!

Behind the lens metering with the Spiratone MINITEL is a snap. Also, on all cameras with automatic aperture-preferred systems (such as the Canon A-1, Contax RTS, Minolta XG-7, XD11, Nikon FE, EL-2, Pentax ME, K2, Yashica FX-1, FR, etc.), the MINITEL works just like a fully automatic lens. On all other cameras with behind-the-lens metering systems, you simply determine exposure with the 'stop-down' method. The MINITEL'S effective aperture can be reduced to f/16 with the neutral density filter; exposure is always controlled by the choice of shutter speed.

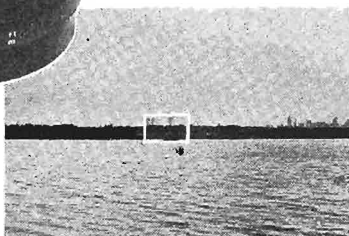
**TECHNICAL DATA**—Design: Photographic catadioptric; Resolving power: 48 l/mm or better, axial: 34 l/mm or better near corner; Chromatic aberration: less than 0.2mm for visible spectrum. Minimum focus: 12' covering field size of 6½x10"—equivalent to a 50mm lens focusing at 1.2'.



**SAVE ON ACCESSORIES:**

|   | Reg. Price | If ordered at same time as MINITEL |
|---|------------|------------------------------------|
| 2x (1000mm f/16) converter  | \$16.00    | \$12.00                            |
| 3 pc. Ext. Tube Set (for closeups to under 9', to fully cover a subject as small as a postcard) | 6.00       | 5.00                               |
| Metal screw-in telephoto hood   | 9.99       | 7.00                               |
| 77mm Custom Polarizer   | 21.44      | 17.00                              |
| 77mm Opticap  | 10.00      | 8.00                               |
| 77mm, most other filters (specify color), each  | 20.00      | 16.00                              |

With normal 50mm lens



Spiratone 500mm f/8 Mirror MINITEL, complete with Skylight, Yellow, 4X Neutral Density rear-mounting filters, camera fitting for virtually any 35mm focal plane shutter SLR (please name yours) and case

**\$300**

Shpg. Chge. \$8.00

Zeroing in on 1/100th area of same scene, from the same position, with 500mm MINITEL handheld! Note principal subject not even visible with normal lens.

See Page