

1-800-737-3537

BESELER

UNIVERSAL 14, 20 & 24 EASEL

Attaching the Masking Blades to the Easel

To attach to the easel, align the Blade Grip with the Guide Rail and press down until seated (see Fig. 1).

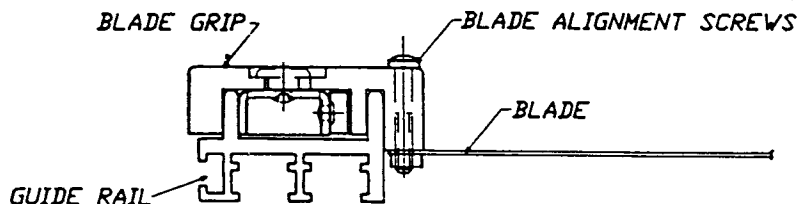


FIG. 1

The two short Blades should be installed first on the front Guide Rail. The two longer Blades can then be installed one on either side rail or both on the same side rail.

To adjust the blades if they are not square, loosen the blade alignment screws, realign blades until square and tighten screws.

Paper Holding Slots

Four full length slots for standard size papers are provided.

For the Universal 14 Easel:

4x5
5x7
8x10
11x14

For the Universal 20 Easel:

5x7
8x10
11x14
16x20

For the Universal 24 Easel:

8x10
11x14
16x20
20x24

Use of the appropriate paper slot aligns the paper in the center of the easel.

Setting Borders

The scales on your easel have been adjusted to be nominally correct when the paper is loaded into the appropriate slot and pushed fully to the left. For consistent results always push the paper to the left after inserting in the slot. To set, move the blades so that the edge of the Blade Grip closest to the center is at the desired dimension.

The scale dimensions are 1/2 size. When the left and right blades are both set on 10, the space between the blades is 10 inches. If you want to print an 8"x10" with 1/4" border all around, the picture area is 7-1/2"x9-1/2". Therefore, set the Blade Grips to 7-1/2" on the vertical scales and 9-1/2" on the horizontal scale.

OPTIONS

Your four bladed easel can be easily converted to a deluxe borderless easel with the optional Borderless Kit. The kit is easily installed and removed from the easel.

Order Cat. #8503 for the 11x14 Borderless Kit
Cat. #8504 for the 20x24 Borderless Kit
Cat. #8506 for the 16x20 Borderless Kit

Test Strip Printing

The removable blade feature of this easel makes it possible to use for test strip printing. To do so, arrange all of the blades on one side of the Guide Rail as shown in Fig. 2.

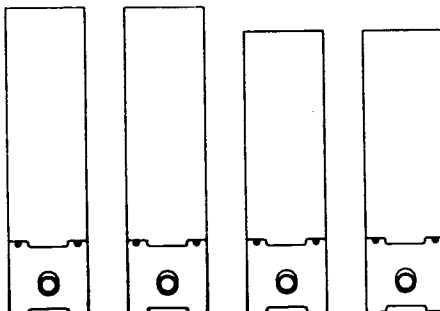


FIG. 2

Opening and Closing

Raise the frame using the handle located on the front. The frame will stay in the open position so that you can load the paper. To close, lower the frame.

Paper Variation

There is considerable variation in the size of enlarging paper due to the manufacturer's cutting tolerances and because the paper size changes with changes in humidity. Therefore, to achieve uniform borders some adjustment may have to be made. The most constant results will be achieved by always pushing the paper to the left.

Border Tape

Included with your easel is a length of white tape. This tape can be placed down the center of the blades to aid in cropping. When you crop, you will be better able to see the full extent of the image. It is suggested that the tape be placed $3/16$ " from the edge of the blade (see Fig. 3).

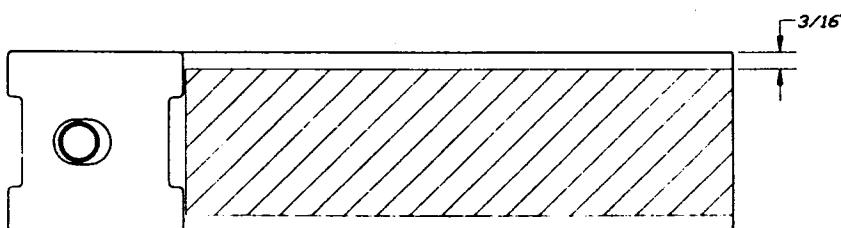


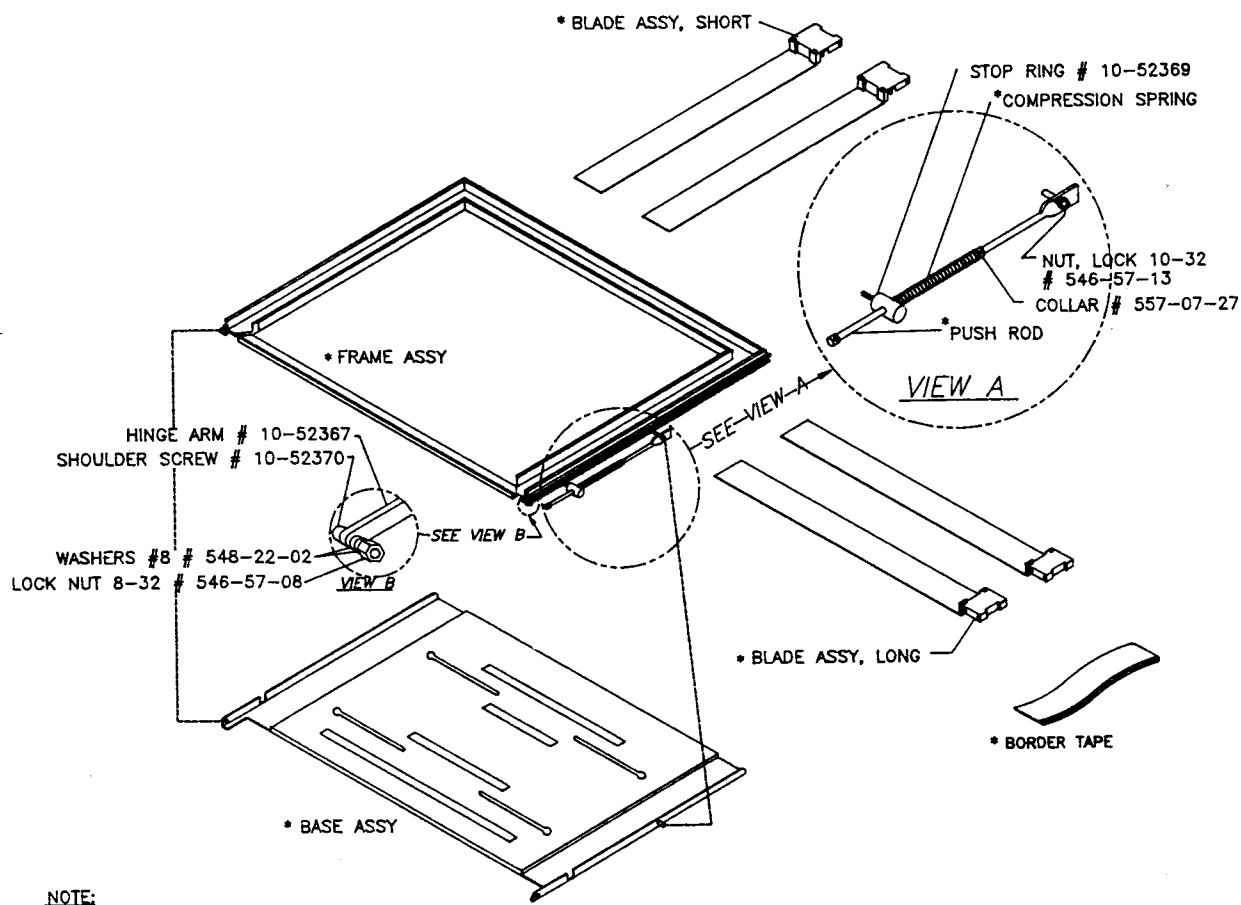
FIG. 3

To install the tape, cut lengths equal to the top length of the blade. Remove one end of the tape liner and carefully place on the blade $3/16$ " from the side. Continue peeling off the liner and pressing the tape down on the blade until you reach the end. Trim off any excess.

If you want to revert back to all black blades, remove the two screws from the blade grip, turn the blade to the back side and reassemble.

Care of Your Easel

This easel requires no special care of maintenance. If the blade grips start to stick, rub a little dry stick lubricant on the sides of the guide rails.



NOTE:
* SEE TABLE BELOW

EXPLODED VIEW - UNIVERSAL EASEL

	UNIVERSAL 14	UNIVERSAL 20	UNIVERSAL 24
BLADE ASSY, SHORT	10-52373-02	10-52373-05	10-52373-04
BLADE ASSY, LONG	10-52373-01	10-52373-04	10-52373-03
FRAME ASSY	10-52379-10	10-52379-30	10-52379-20
BASE ASSY	10-52389	10-52817	10-52395
COMPRESSION SPRING	562-72-67	562-72-68	562-72-68
BORDER TAPE	573-56-82-480	573-56-82-744	573-56-82-832
PUSH ROD	10-52368-01	10-52368-02	10-52368-02